

## Quiz : Unusual whitish gastric mucosal lesion

Young Sik Woo<sup>1</sup>, Chang Soo Choi<sup>2</sup>, Jong Seol Park<sup>1</sup>, Jaehoon Jahng<sup>1</sup>, Yong Sung Kim<sup>1</sup>

(1) Department of Internal Medicine, Wonkwang University Sanbon Hospital, Gunpo, Korea ; (2) Sokpyeonhan Internal Medicine Clinic, Namwon, Korea.

### Quiz

A 71-year-old man underwent upper gastrointestinal endoscopy for screening of gastric cancer. No abnormal finding was found on the physical examination and the laboratory analysis. Endoscopy showed the irregular-shaped flat whitish mucosal lesion with slight central depression in lesser curvature of high body (Fig. 1a). This lesion was about 2.5cm in diameter and definitely away from normal esophageal mucosa of gastroesophageal junction. What is your diagnosis?

### Answer

The biopsy specimen from this lesion revealed stratified squamous epithelial mucosa (Fig. 1b). Gastric squamous metaplasia is an unusual clinical entity and few cases have been reported. The endoscopic finding of gastric squamous metaplasia is whitish or pale mucosal lesion. It was commonly found in the lesser curvature and cardia and rarely extended to body of the stomach. Chromoendoscopy using Lugol's solution can help to differentiate gastric squamous metaplasia from other whitish mucosal lesions such as gastric dysplasia or cancer. Although the pathogenesis of gastric squamous metaplasia is not clear, this condition is associated with chronic inflammation, healing of ulcer or surgery.



Fig. 1a. — Esophagogastroduodenoscopy shows the irregular-shaped whitish plaque in lesser curvature of high body. About 2.5cm sized mucosal lesion is away from normal esophageal mucosa of gastroesophageal junction.

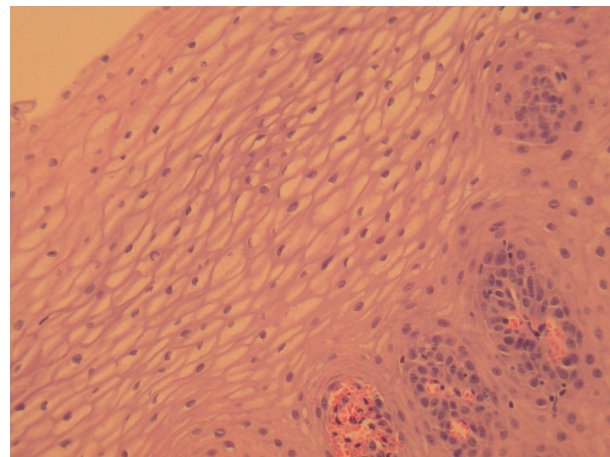


Fig. 1b. — Histopathologic finding revealed stratified squamous epithelial mucosa (H&E stain, ×200).

Correspondence to : Yong Sung Kim, Sanbon-dong 321, 15865 Gunpo  
E-mail : wms89@hanmail.net

This work was supported by Wonkwang University 2016.

Submission date : 29/10/2016  
Acceptance date : 14/12/2016

*Acta Gastro-Enterologica Belgica*, Vol. LXXX, April-June 2017